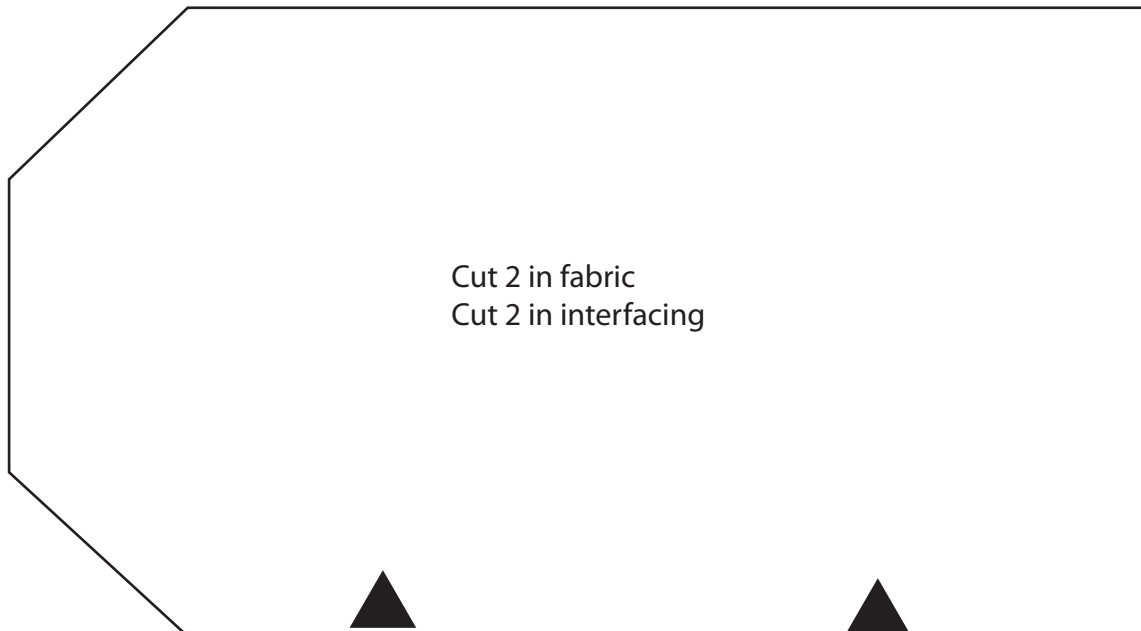
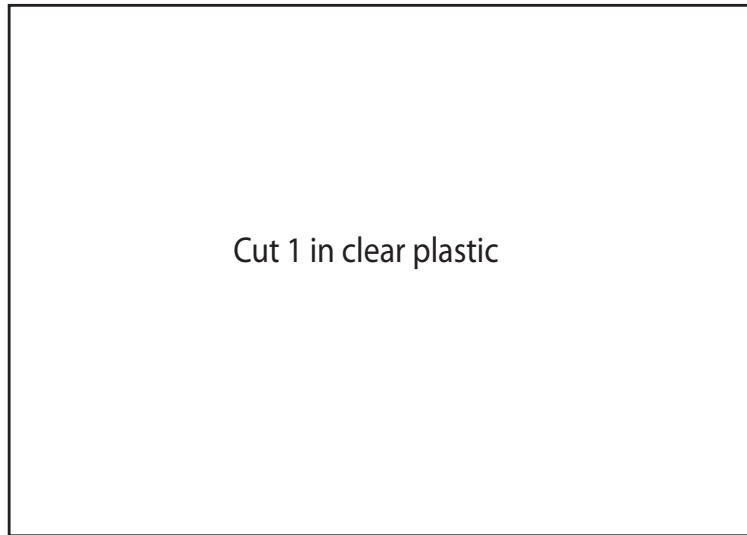


# Sew a luggage tag - free pattern from Clothestline

Check your printing.

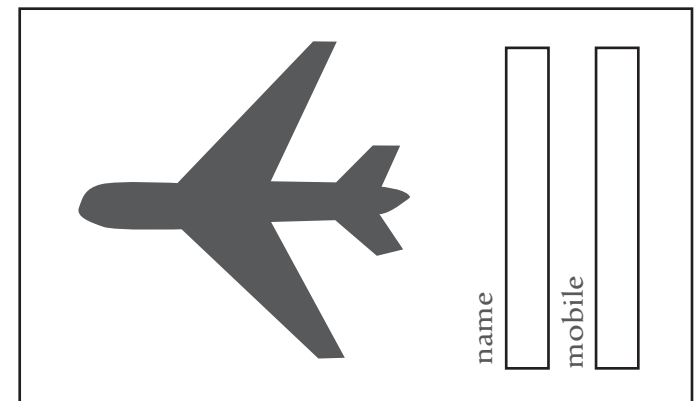
Square below is  
2.5 x 2.5 cm  
(1 x 1")



Print onto light card and use this on your luggage tag:



... or maybe you prefer this one:



... or simply insert your own 5 x 9 cm (2 x 3.5") business card !

*Strap* /Cut 1 piece 32 x 6.4 cm (12 x 2.5")

**Or** just use 60cm (24") purchased ribbon cut into 2 x 30cm (12") pieces